

WHITWORTH AGR-PUD PLAT ONE

BEING A REPLAT OF ALL OF TRACTS 17 THROUGH 23, TRACTS 26 THROUGH 30, TRACTS 43 THROUGH 47, AND A PORTION OF TRACTS 1 THROUGH 9, TRACTS 16, 24, 25, 31, 32, 42, AND 48, AND A PORTION OF ROAD, DYKE AND DITCH RESERVATIONS 30 FEET IN WIDTH, LYING BETWEEN SAID TRACTS 16 THROUGH 24, AND SAID TRACTS 25 THROUGH 33, AND LYING BETWEEN TRACTS 8, 17 AND 9, 16, ALL LYING WITHIN BLOCK 60, PALM BEACH FARMS CO. PLAT NO. 3, ACCORDING TO THE PLAT THEREOF, AS RECORDED IN PLAT BOOK 2, PAGE 45, OF THE PUBLIC RECORDS OF PALM BEACH COUNTY, FLORIDA, LYING IN SECTION 31, TOWNSHIP 45 SOUTH, RANGE 42 EAST.

SHEET 17 OF 18

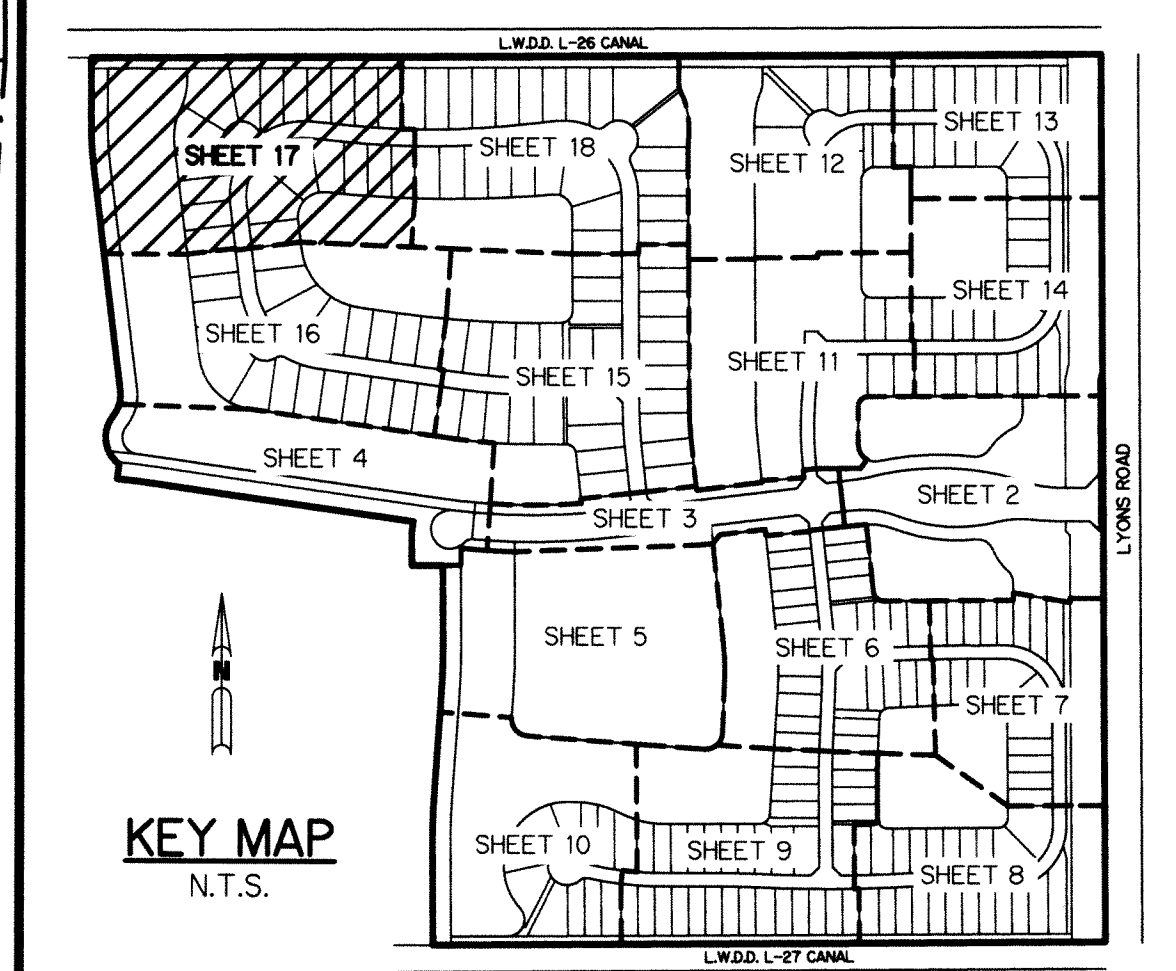
205



SCALE: 1" = 40'

LEGEND:

- - SET PERMANENT REFERENCE MONUMENT 4"x4" CONCRETE MONUMENT WITH 1.5" DISK STAMPED L.B. #7741
- - FOUND PERMANENT REFERENCE MONUMENT 4"x4" CONCRETE MONUMENT WITH 1.5" DISK STAMPED L.B. #7741
- - SET PERMANENT CONTROL POINT NAIL WITH 1.25" DISK STAMPED L.B. #7741
- - FOUND PERMANENT CONTROL POINT NAIL WITH 1.25" DISK STAMPED L.B. #7741
- AGR - AGRICULTURAL
- Δ - DELTA ANGLE
- B.E. - BUFFER EASEMENT
- BLK - BLOCK
- CB - CHORD BEARING
- CH - CHORD DISTANCE
- C - CENTERLINE
- D.B. - DEED BOOK
- D.E. - PRIVATE DRAINAGE EASEMENT
- F.P.L. - FLORIDA POWER & LIGHT
- ARC - ARC LENGTH
- L.A.E. - LIMITED ACCESS EASEMENT
- LB - LICENSED BUSINESS
- L.M.A.E. - LAKE MAINTENANCE ACCESS EASEMENT
- L.M.E. - LAKE MAINTENANCE EASEMENT
- L.W.D.D. - LAKE WORTH DRAINAGE DISTRICT
- NR - NOT RADIAL
- NR.T.R. - NOT RADIAL TO REAR LINE
- N.T. - NON-TANGENT
- NOT TO SCALE
- O.R.B. - OFFICIAL RECORD BOOK
- O.E. - MAINTENANCE & ROOF OVERHANG EASEMENT
- P.B.C. - PALM BEACH COUNTY
- P.B.C.U.E. - PALM BEACH COUNTY UTILITY EASEMENT
- PLAT BOOK
- P.C. - POINT OF CURVATURE
- P.C.C. - POINT OF COMPOUND CURVATURE
- P.C.P. - PERMANENT CONTROL POINT
- P.C.E. - PERMANENT CONSTRUCTION EASEMENT
- PG. - PAGE
- PGS. - PAGES
- P.O.B. - POINT OF BEGINNING
- P.N.R.I. - POINT OF NON-RADIAL INTERSECTION
- P.N.T.I. - POINT OF NON-TANGENT INTERSECTION
- P.O.C. - POINT OF COMMENCEMENT
- P.O.I. - POINT OF INTERSECTION
- P.R.C. - POINT OF REVERSE CURVATURE
- P.R.I. - POINT OF RADIAL INTERSECTION
- P.S.M. - PROFESSIONAL SURVEYOR AND MAPPER
- P.T. - POINT OF TANGENCY
- PUD - PLANNED UNIT DEVELOPMENT
- R - RADIUS
- RAD - RADIAL
- R/W - RIGHT-OF-WAY
- R.D. & D. - ROAD, DYKE AND DITCH RESERVATION
- SIRC - SET 5/8" IRON ROD & CAP STAMPED "PRM LB7741"
- SN&D - SET MAGNETIC NAIL & DISK STAMPED "PRM LB7741"
- S.T. - SURVEY TIE
- TYP. - TYPICAL
- U.E. - UTILITY EASEMENT
- N=780000.00 E=930000.00 - STATE PLANE COORDINATE VALUE



KEY MAP
N.T.S.

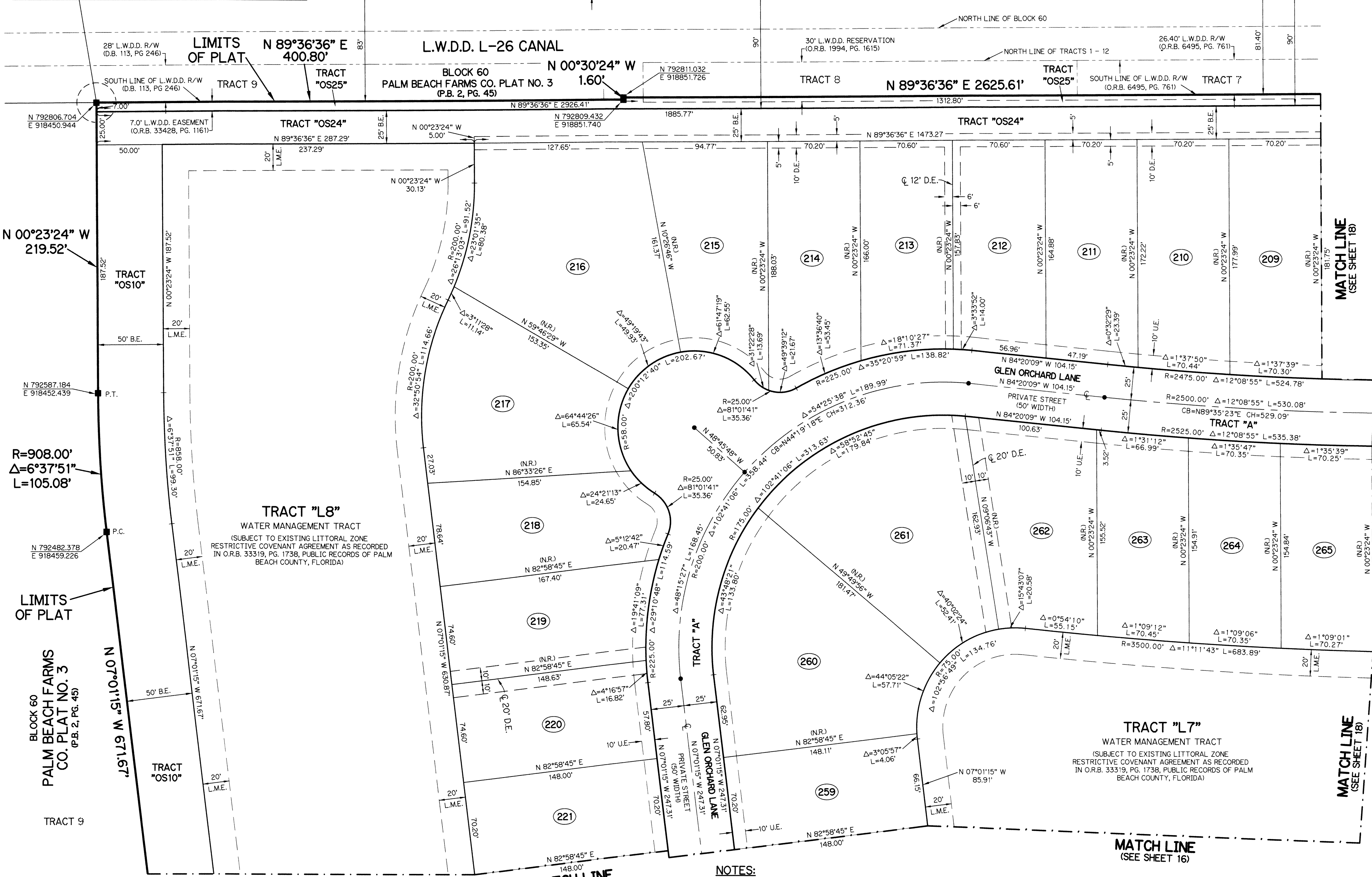
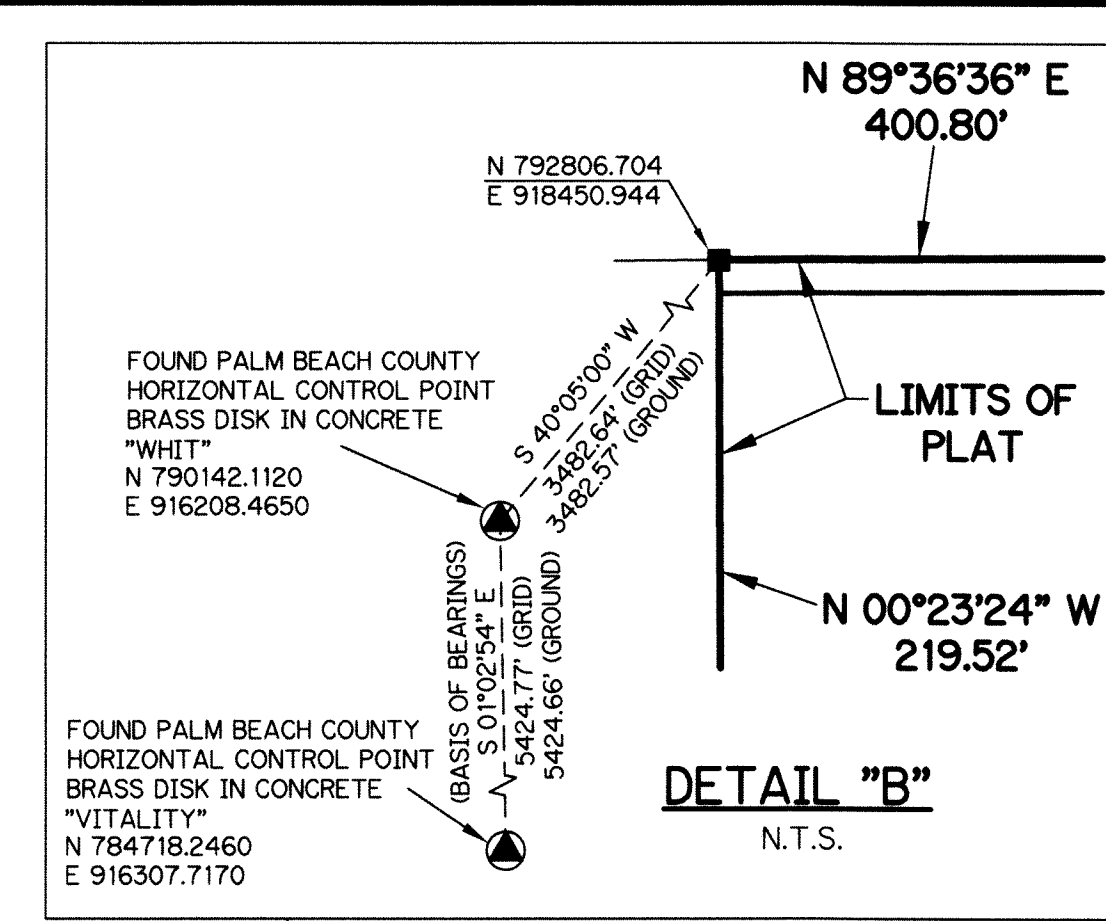
WHITWORTH AGR-PUD PLAT ONE

SH0338

SHEET 17 OF 18

LYONS WEST AGR PUD - PLAT THREE
(P.B. 113, PG. 90)

LYONS WEST AGR PUD - PLAT FOUR
(P.B. 113, PG. 21)



NOTES:
 COORDINATES SHOWN ARE GRID COORDINATES DATUM = NAD 83 (1990 ADJUSTMENT)
 ZONE = FLORIDA EAST ZONE
 LINEAR UNIT = U.S. SURVEY FEET
 COORDINATE SYSTEM = 1983 STATE PLANE TRANSVERSE MERCATOR PROJECTION
 ALL DISTANCES ARE GROUND (UNLESS OTHERWISE NOTED)
 SCALE FACTOR = 1.00002026
 PLAT BEARING = GRID BEARING
 GROUND DISTANCE X SCALE FACTOR = GRID DISTANCE

THIS INSTRUMENT WAS PREPARED BY
 PERRY C. WHITE, P.S.M. 4213, STATE OF FLORIDA
 SAND & HILLS SURVEYING, INC.
 8461 LAKE WORTH ROAD, SUITE 410
 LAKE WORTH, FLORIDA 33467
 LB-7741

LIMITS OF PLAT

LIMITS OF PLAT

MATCH LINE
(SEE SHEET 18)

MATCH LINE
(SEE SHEET 16)

TRACT "L8"
 WATER MANAGEMENT TRACT
 (SUBJECT TO EXISTING LITTORAL ZONE
 RESTRICTIVE COVENANT AGREEMENT AS RECORDED
 IN O.R.B. 33319, PG. 1738, PUBLIC RECORDS OF PALM
 BEACH COUNTY, FLORIDA)

TRACT "L7"
 WATER MANAGEMENT TRACT
 (SUBJECT TO EXISTING LITTORAL ZONE
 RESTRICTIVE COVENANT AGREEMENT AS RECORDED
 IN O.R.B. 33319, PG. 1738, PUBLIC RECORDS OF PALM
 BEACH COUNTY, FLORIDA)

BLOCK 60
 PALM BEACH FARMS
 CO. PLAT NO. 3
 (P.B. 2, PG. 45)

TRACT 9

R=908.00'
 Δ=6°37'51"
 L=105.08'

N 00°23'24" W
 219.52'

28' L.W.D.D. R/W
 (D.B. 113, PG. 246)

FOUND PALM BEACH COUNTY
 HORIZONTAL CONTROL POINT
 BRASS DISK IN CONCRETE
 "VITALITY"
 N 784718.2460
 E 916307.7170

FOUND PALM BEACH COUNTY
 HORIZONTAL CONTROL POINT
 BRASS DISK IN CONCRETE
 "WHIT"
 N 790142.1120
 E 916208.4650

N 792806.704
 E 918450.944

N 89°36'36" E
 400.80'